

SIMPLANT® Planner workflow

PARTIALLY EDENTULOUS

1 Clinician: Examination



Take impression or intra-oral scan



Make bite index or spacer

2 Dental Lab: Preparations



Make plaster model (Extract teeth)

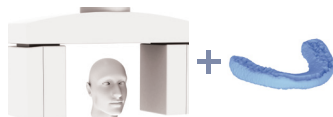


Make wax-up or digital tooth set-up



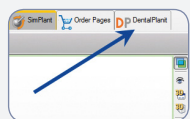
Optical scans from plaster model with and without wax-up

3 Clinician or Scan Center: (CB) CT



SINGLE SCAN: Scan patient with bite index

4 Clinician: Request SIMPLANT file



Open SIMPLANT, click DentalPlanit button, or go directly to www.dentalplanit.com

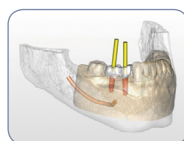


- 1) Request SIMPLANT conversion
- 2) Upload (CB)CT data
- 3) Upload optical scans or send plaster model and wax-up and DentalPlanit prescription form to service provider

5 Clinician: Planning in SIMPLANT



Download SIMPLANT file with soft tissue and tooth set-up from DentalPlanit



Plan implants & abutments



Order SIMPLANT Guide (tooth or bone supported)

TOTALLY EDENTULOUS

1 Clinician: Examination



Create a new or reline recent prosthesis. Add dual scan markers



Make bite index

2 Clinician or Scan Center: (CB) CT

DUAL SCAN:



+

+

+

+

+

+

+

+

+

+

+

+

+

+

+

+

+

+

+

+

+

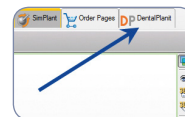
+

+

Scan 1: Patient + scan prosthesis + bite index

Scan 2: Scan prosthesis

3 Clinician: Request SIMPLANT file

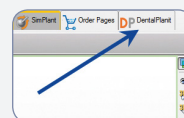


Open SIMPLANT, click DentalPlanit button, or go directly to www.dentalplanit.com

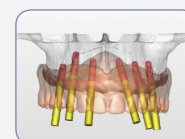


Request SIMPLANT conversion and upload (CB)CT data

4 Clinician: Planning in SIMPLANT



Download SIMPLANT file with soft tissue and tooth set-up from DentalPlanit



Plan implants & abutments



Order SIMPLANT Guide in SIMPLANT (mucosa or bone supported)

The workflows described in the document are optional but recommended.

SIMPLANT® Planner workflow: Guidelines

Partially + totally edentulous: Bite index preparation guidelines

Inject the radiolucent bite registration material (e.g. Aquasil Bite) onto the patient's occlusal surface.

Guide the patient to close the mouth into the desired position. Patient should not completely close mouth.

Remove the bite index and trim excess material with a sharp instrument.

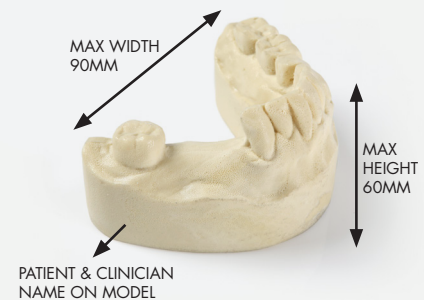
Thickness of bite index: 3-5 mm



Partially edentulous: Plaster model & wax-up preparation guidelines

- Use accurate impression material (poly-ether, silicone).
- Use an up-to-date and intact plaster model.
- A maxillary model should contain the complete palatum and tuberositas.
- Grind away teeth that will be extracted during implant surgery from the plaster model.
- Prepare a wax-up of the ideal tooth set-up.
- Mark the patient's name and the name of the dentist or ordering person on the model.
- Add the DentalPlanit conversion order form or SIMPLANT Guide order form.

Note: Full extraction: 1 model with original dentition, 1 model with teeth ground away.



Totally edentulous: Prosthesis preparation guidelines for dual scan procedure

- Create 8 small, superficial cavities.
- Dispense a drop of radiolucent resin (e.g. Triad®, Dualine®) and submerge a Dual Scan marker. Place the resin with the marker in a cavity.
- If necessary, light cure to reduce curing time.
- Repeat these steps for all Dual Scan markers.
- Scan prosthesis should be radiolucent, free of metal



(CB)CT scan guidelines

Partially edentulous: single scan

- Scan the patient wearing the bite index or spacer
- For large (few teeth left) or critical (e.g. Kennedy Class I) cases, use cotton wool to separate cheeks from the arch or apply Dual Scan procedure.



Totally edentulous: dual scan

- Scan 1: Scan patient wearing the bite index and radiolucent prosthesis with Dual Scan markers
- Scan 2: Scan prosthesis alone, in the same left / right, top / bottom position as during Scan 1

